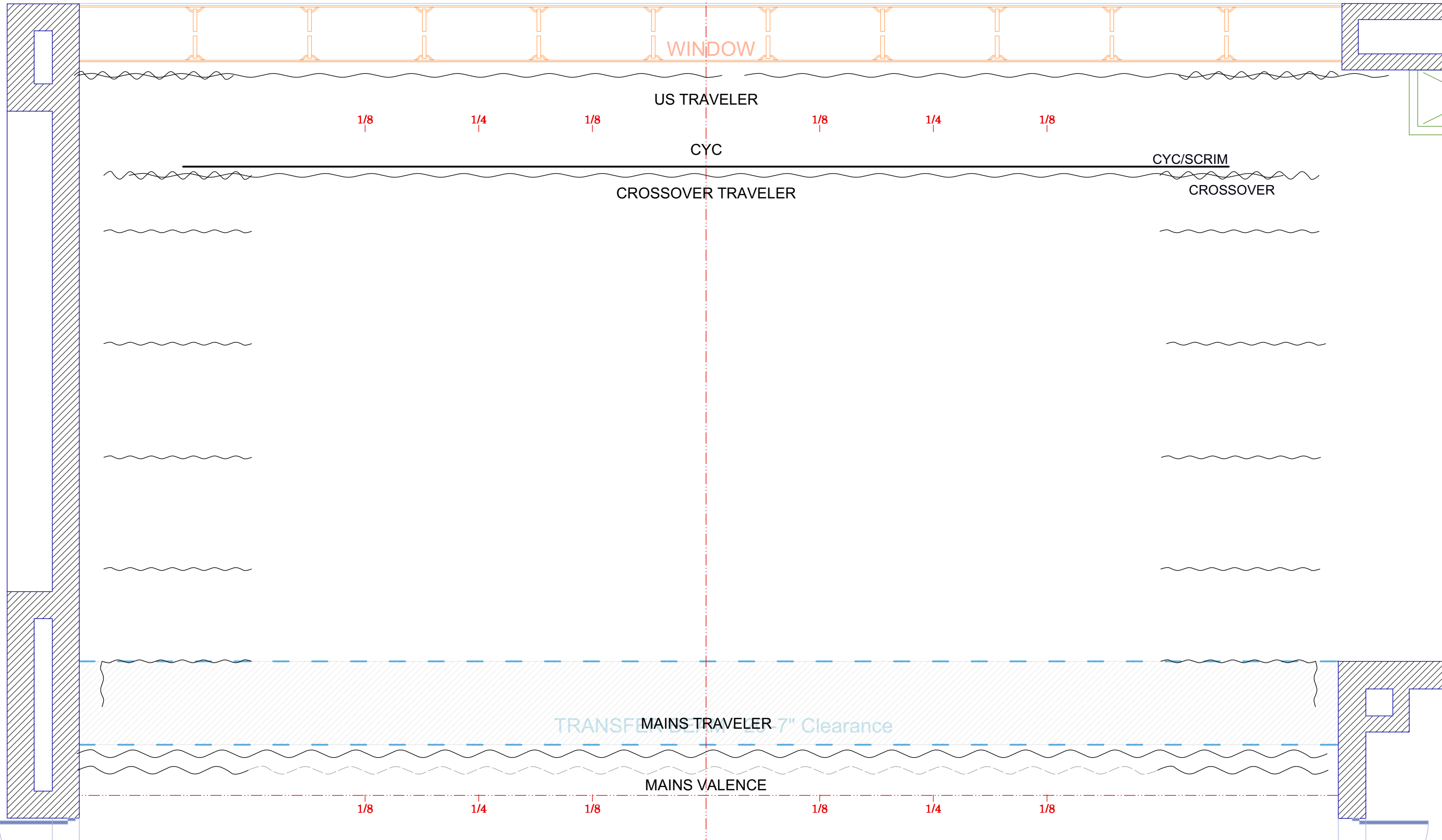
 DECIDEDLY JAZZ DANCEWORKS	Drawing Floor Plan	Scale 3/32" = 1'-0"
	Show Name House Hang	Rev. 11/22/2016



WINDOW

US TRAVELER

1/8

1/4

1/8

1/8

1/4

1/8

CYC

CYC/SCRIM

CROSSOVER TRAVELER

CROSSOVER

MAINS TRAVELER 7" Clearance

MAINS VALENCE

1/8


1/4

1/8

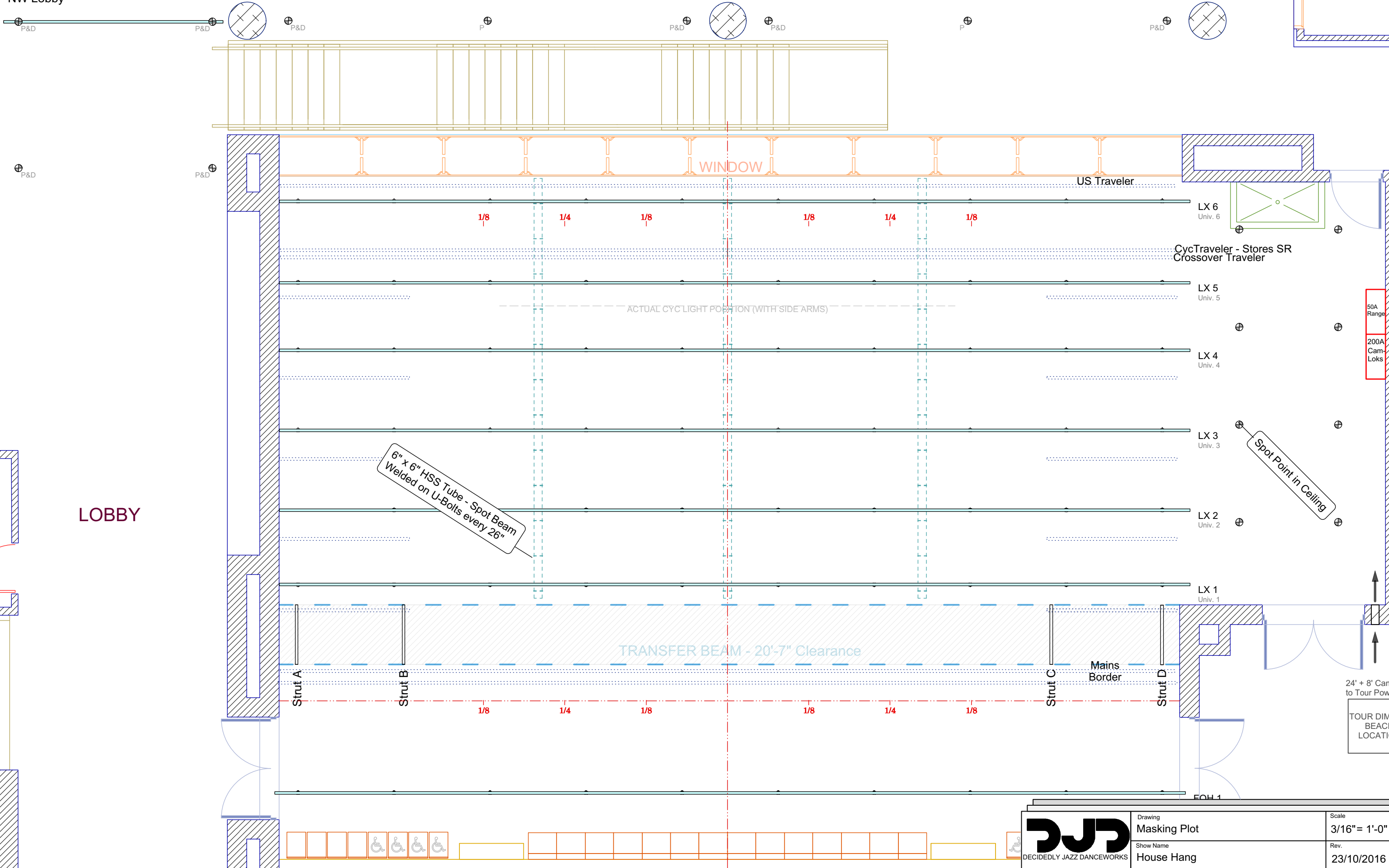
1/8

1/4

1/8


 <p>DECIDEDLY JAZZ DANCEWORKS</p>	Drawing	Scale
	Masking Plot	1/4" = 1'-0"
	Show Name	Rev.
DJD House Hang	17/01/19	

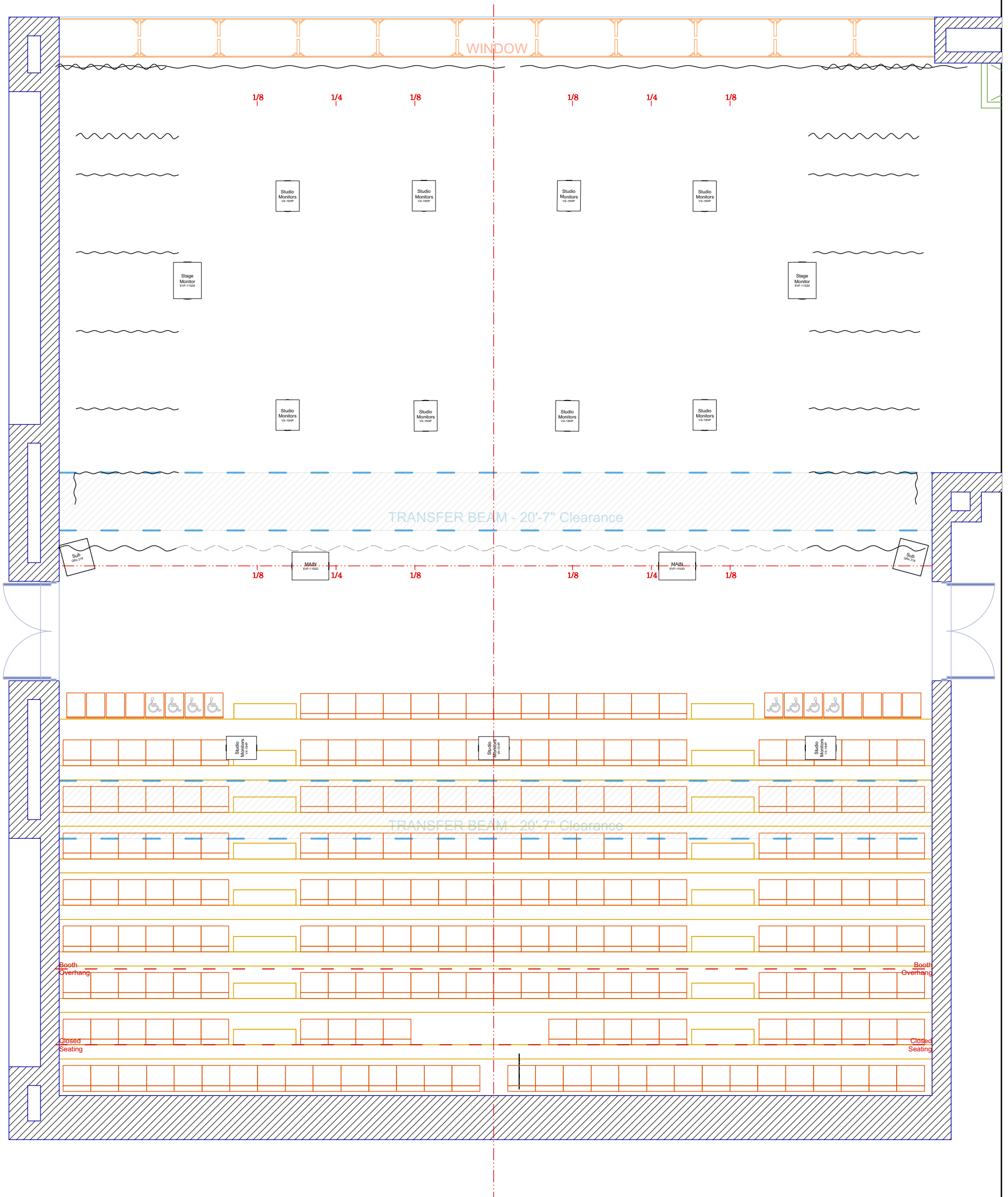
NW Lobby




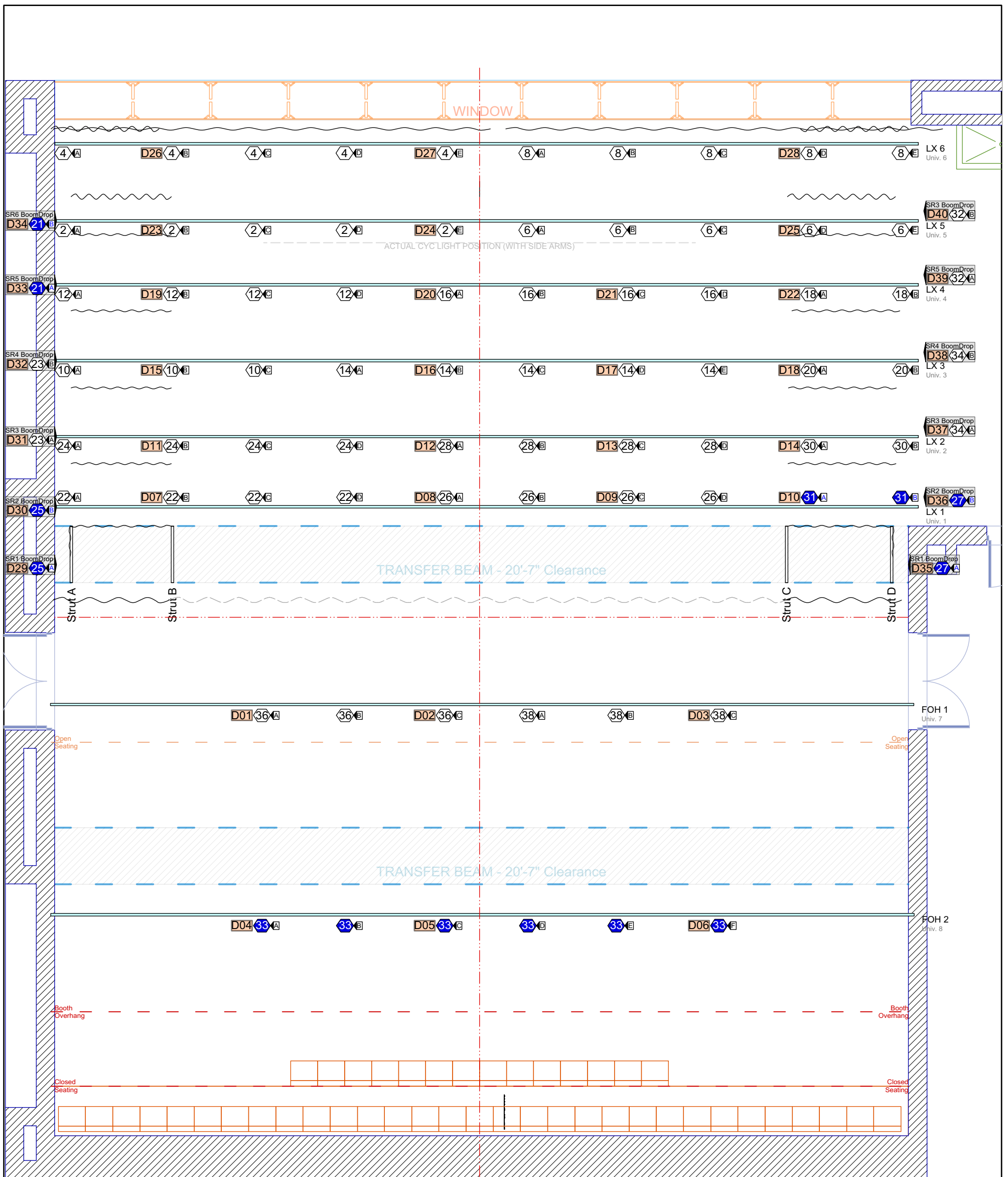
LOBBY

50A Range
200A Cam-Loks

 <p>DECIDEDLY JAZZ DANCEWORKS</p>	Drawing Masking Plot	Scale 3/16" = 1'-0"
	Show Name House Hang	Rev. 23/10/2016



 DECIDEDLY JAZZ DANCEWORKS	Drawing Sound Plot	Scale XX= 1'-0"
	Show Name House Hang	Rev. 23/10/2016





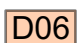
Power Notes

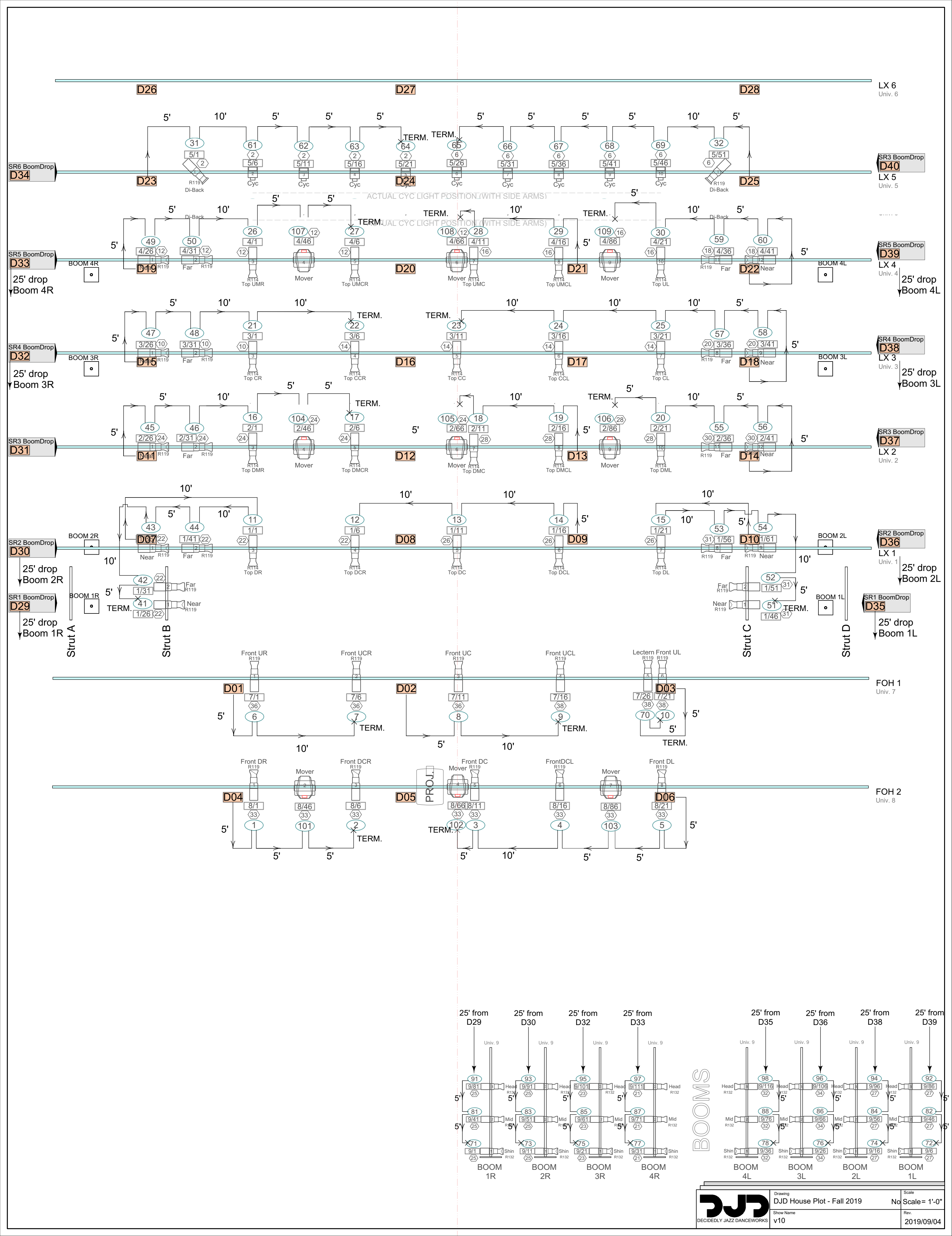
1. Please note that the entire lighting system is run off of hot power. There are no permanent dimmers installed. Two 6ch-15Amp portable dimmers for conventional lighting can be made available upon request.
2. There is a 200Amp x3 phase company switch Stage Left with Cam-Lok connectors. Ground/Neutral genders are reversed. We do not stock any feeder cable or adaptors.
3. There are several 15A Edison wall circuits throughout the venue. In addition, there is a 50Amp range plug USR, USL, and in the control booth.
4. All overhead circuits are 15Amp L6-15 receptacles. A small quantity of L5-20 and Edison adaptors are available.
5. FOH 2 is entirely fed by one 20Amp breaker (Circuit 33) and there are 6 receptacles. If load exceeds 20Amps on FOH 2, another circuit will need to be run out of the booth window to split up the load.
6. All circuits except the Boom Drops are controlled by a single relay switch located in the booth. The switch is labelled "CONT ON/OFF." Breakers for all circuits are located in the Stage Left panel.
7. "Boom Drop" circuits and data ports are located at the ends of LX 1 thru 5, approximately 2ft above the pipe trim.

Data Notes

1. See House Plot Network Map document for Universe patches.
2. The lighting network accepts sACN/ETCnet, ArtNet, and Pathnet protocols. There are Cat5e patch ports in the booth and audio patch panels that can be used for tying in.
3. All data ports can be configured into any universe. For the House Hang, the overhead is typically Universe 1 and the Boom Drops are Universe 2.
4. Keep data runs under 150ft and daisy chain a maximum of 10 fixtures from a single data port. Terminate if chain is over 4 fixtures.

Legend

-  L6-15 Circuit (15Amp Brkr)
-  L6-15 Circuit (20Amp Brkr)
-  5pin XLR Data Port



WINDOW

TRANSFER BEAM - 20'-7" Clearance

TJ INFILL USR
TJ INFILL USR
TJ INFILL USL
TJ INFILL USL

SR INFILL DR
DR
DR
DR
DR

US CORNER B
SR PERIM AR
SR PERIM AR
AR

US PERIM
1/8 C

1/4

US PERIM
C 1/8

US PERIM
C

1/8

US PERIM
C 1/4


US PERIM
1/8 C

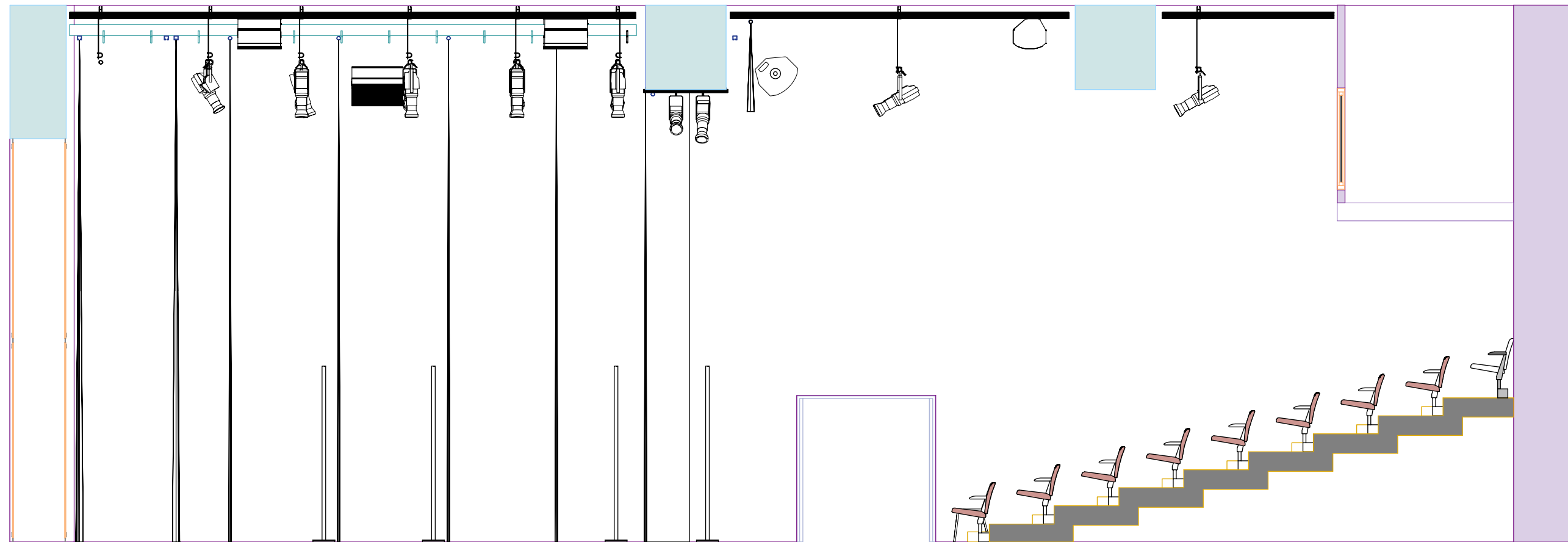
US CORNER B


SL INFILL DL
SL INFILL DL
SL PERIM AL
DL
SL PERIM AL
DL
SL PERIM AL
SL PERIM AR

DSL RAMP 4
DSL RAMP 3
DSL RAMP 2
DSL RAMP 1

1/8 1/4 1/8 1/8 1/4 1/8

 DECIDEDLY JAZZ DANCEWORKS	Drawing Ginger	Scale 1/4" = 1'-0"
	Show Name House Hang	Rev. 23/10/2016



 DECIDEDLY JAZZ DANCEWORKS	Drawing Section	Scale 3/16" = 1'-0"
	Show Name House Hang	Rev. 13/10/2016